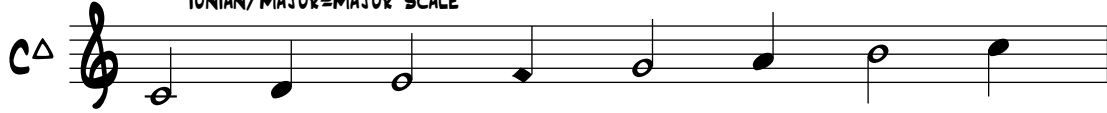


LearniMusicTheory.net
4.2.5 BASIC JAZZ SCALE-CHORDS

PRIMARY CHORD TONES ARE SHOWN WITH OPEN NOTEHEADS. SEE 4.2.1--4.2.4 FOR VOICINGS.
 "HANDLE WITH CARE" DISSONANCES ARE SHOWN WITH SQUARE NOTEHEADS.

MAJOR TONIC FUNCTION (FUNCTION AS LOCAL TONIC CHORDS)

IONIAN/MAJOR=MAJOR SCALE



I

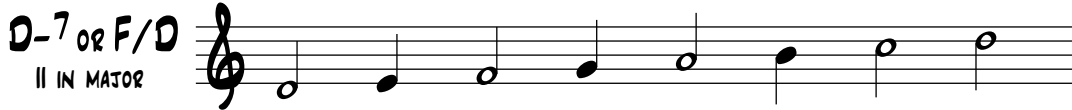
MINOR TONIC FUNCTION

MINOR-MAJOR=ASCENDING MELODIC MINOR (USE SAME NOTES DESCENDING)



PREDOMINANT FUNCTION (LEAD TO DOMINANT FUNCTION CHORDS)

DORIAN=MAJOR SCALE, LOWER 3RD AND 7TH STEPS; OR MAJOR SCALE PATTERN STARTING ON 2ND SCALE STEP



II

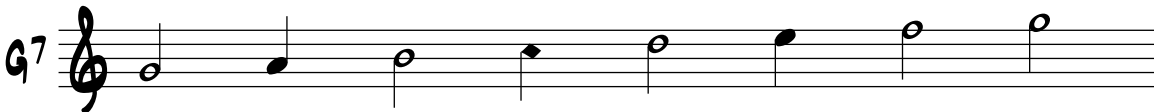
LOCRIAN OR HALF-DIMINISHED=MAJOR SCALE STARTING ON THE SEVENTH STEP OF THE SCALE

ALSO = PHYRGIAN W/B5; USE FOR b9; SOMETIMES THE 9TH IS RAISED INSTEAD



DOMINANT FUNCTION (FUNCTION LOCALLY AS DOMINANTS TO OTHER CHORDS; SEE VOLUME 4, APPENDIX 11 FOR MORE)

MIXOLYDIAN = V IN MAJOR = MAJOR SCALE STARTING ON THE FIFTH STEP OF THE SCALE; OR MAJOR SCALE WITH b7



V

ALTERED DOMINANT = V IN MINOR

INCLUDES ALL POSSIBLE ALTERATIONS; OMIT THE 5TH

